

# **Weekly Sector & Index Review**

**Chart Date: May 26, 2026**

**Prepared by:**

*Bruce Marshall*





## Weekly Market Overview Synopsis

Page 2

1 The last two week "Magnificent Seven" Price Action was as follows:

Symbol	AAPL	AMZN	GOOGL	META	MSFT	NFLX	TSLA	Average	Stock Symbol
% Change	2.87%	0.80%	-3.49%	-0.65%	-0.82%	1.79%	0.89%	0.89%	Magnificent Seven Data for this week.
% Change	2.39%	-3.12%	-0.99%	0.76%	1.65%	-0.50%	-1.43%	-0.18%	Magnificent Seven Data for last week.

2 The last 4 Week VIX Price Action was as follows:

16.70	18.43	17.19	16.99	-	17.33	Index Price Action Last 4 Weeks
-9.39%	7.21%	1.18%	-	-	-0.33%	3 Week VIX Average

3 The last 4 Week \$DXY Price Action was as follows:

99.32	99.27	97.84	98.21	-	98.66	\$DXY Price Action Last 4 Weeks
0.05%	1.46%	-0.38%	-	-	0.38%	3 Week \$ DXY Average

4 Weekly Index Price Action included the following:

Winners	SPY	\$COMPX	DIA	Losers	\$RUT	IWM	\$NDX.X	Average	Stock Symbol
	0.21%	-0.08%	-0.14%		-2.37%	-2.30%	-0.38%	0.00%	Top 3 Winner Index Weekly Average Move
								-1.68%	Top 3 Loser Index Weekly Average Move

5 Weekly Sector Price Action included the following:

Winners	XLE	CIBR	XLV	Losers	XHB	ARKK	XLY	Average	Stock Symbol
	6.75%	4.93%	1.09%		-6.04%	-5.20%	-3.06%	4.26%	Top 3 Winner Sector Weekly Average Move
								-4.77%	Top 3 Loser Sector Weekly Average Move

6 Weekly Semi-Conductor Sector [XSD] Price Action included the following:

Winners	SMTC	NVDA	MRVL	Losers	ALGM	CRDO	QCOM	Average	Stock Symbol
	12.96%	4.70%	3.98%		-11.97%	-8.75%	-8.10%	7.21%	Top 3 Winner Weekly XSD Sector Moves
								-9.61%	Top 3 Loser Weekly XSD Sector Moves

7 Weekly Cyber-Security [CIBR] Price Action included the following:

Winners	CSCO	PANW	CHKP	Losers	INFY	OKTA	AVGO	Average	Stock Symbol
	22.42%	16.83%	7.94%		-5.92%	-1.32%	-1.12%	15.73%	Top 3 Winner Weekly XLF Sector Moves
								-2.79%	Top 3 Loser Weekly XLF Sector Moves



## Weekly Market Overview Synopsis

Page 3

8 Weekly Communications Sector [XLC] Price Action included the following:

<u>Winners</u>	TTWO	META	EA	<u>Losers</u>	CHTR	DIS	TMUS	<b>3.62%</b>	Top 3 Winner Weekly XLC Sector Moves
	9.98%	0.76%	0.12%		-9.35%	-4.84%	-4.30%	<b>-6.16%</b>	Top 3 Loser Weekly XLC Sector Moves

9 Weekly Energy Sector [XLE] Price Action included the following:

<u>Winners</u>	XOM	OKE	WMB	<u>Losers</u>	PSX	SLB	MPC	<b>8.61%</b>	Top 3 Winner Weekly XLE Sector Moves
	9.37%	8.42%	8.03%		2.72%	4.00%	4.10%	<b>3.61%</b>	Top 3 Loser Weekly XLE Sector Moves

10 Weekly Financials Sector [XLF] Price Action included the following:

<u>Winners</u>	V	BRK.B	GS	<u>Losers</u>	SPGI	BAC	WFC	<b>1.66%</b>	Top 3 Winner Weekly XLF Sector Moves
	2.20%	1.48%	1.30%		-4.02%	-2.96%	-2.93%	<b>-3.30%</b>	Top 3 Loser Weekly XLF Sector Moves

11 Weekly Technology Sector [XLK] Price Action included the following:

<u>Winners</u>	CSCO	NVDA	NOW	<u>Losers</u>	ACN	CRM	IBM	<b>10.47%</b>	Top 3 Winner Weekly XLK Sector Moves
	22.42%	4.70%	4.29%		-6.47%	-4.51%	-4.51%	<b>-5.16%</b>	Top 3 Loser Weekly XLK Sector Moves

12 Weekly Healthcare Sector [XIV] Price Action included the following:

<u>Winners</u>	LLY	ABBV	JNJ	<u>Losers</u>	ISRG	TMO	PFE	<b>4.28%</b>	Top 3 Winner Weekly XLV Sector Moves
	5.99%	4.42%	2.44%		-6.40%	-5.73%	-1.32%	<b>-4.48%</b>	Top 3 Loser Weekly XLV Sector Moves

13 Friday's Close in Individual Stock Price Action included the following:

<u>Winners</u>	RGTI	SWKS	CRDO	<u>Losers</u>	COIN	TTWO	BMRN	<b>14.05%</b>	Highest Individual Friday Stock Moves
	17.33%	12.99%	11.84%		-4.79%	-4.36%	-4.08%	<b>-4.41%</b>	Lowest Individual Friday Stock Moves



## Weekly Market Overview Synopsis

14 Next Week's Anticipated Moves:

(a) Anticipated Weekly Price Action movement in respective uptrend and downtrend motion is as follows:

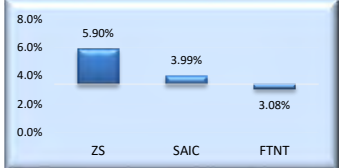
Symbol	\$COMPX	DIA	\$INDU	IWM	QQQ	\$SOX	SPY	Symbol	<b>VIX</b>
Current Price	26,343.97	506.10	50,579.70	285.11	717.43	12,202.54	745.59	Current Price	16.70
Up Market Price	27,387.56 <b>3.96%</b>	516.72 <b>2.06%</b>	51,555.08 <b>1.89%</b>	291.00 <b>2.02%</b>	734.78 <b>2.36%</b>	13,061.66 <b>6.58%</b>	763.82 <b>2.39%</b>	Up Market Price	18.29 <b>8.69%</b>
Down Market Price	25,667.82 <b>-2.57%</b>	491.98 <b>-2.79%</b>	49,773.46 <b>-1.59%</b>	275.01 <b>-3.54%</b>	700.52 <b>-2.36%</b>	11,555.60 <b>-5.30%</b>	738.33 <b>-0.97%</b>	Down Market Price	13.76 <b>-17.60%</b>
	Doji	Cup & Handle	Cup & Handle	3 White Soldiers	Evening Star Doji	3 White Soldiers	Evening star Doji	Candlestick Pattern	
	+	+	+	+	-	+	-	Friday's Candlestick Market Indication Direction	

15 Interesting Bullish Stocks to look at for next week with respective Price Triggers, Candelstick Patterns, Ratings, & Volume include the following:

	Stock	Current Price	Trigger	Up Trend	Up %	Daily ATR	Sector	Candlestick Pattern	Rating [1-10]	Volume
1	FTNT	129.45	134.30	144.46	11.60%	5.52	CIBR	Bullish Meeting Line	6.15	5,819,666
2	OKTA	92.24	92.55	97.25	5.43%	3.92	CIBR	Cup & n Handle	7.25	3,007,460
3	PANW	260.58	261.65	290.35	11.42%	11.29	CIBR	Three White Soldiers	7.15	6,629,104
4	MRK	122.42	122.80	126.68	3.48%	2.40	XLE	Bull Kicker	7.85	14,754,581
5	QRVO	106.46	106.65	111.07	4.33%	3.77	CIBR	Marubozu	8.25	1,497,256
6	SWKS	82.41	82.62	87.24	5.86%	3.84	CIBR	Bearish Engulfing	8.35	5,338,625

16 Interesting Bearish Stocks to look at for next week with respective Price Triggers, Candelstick Patterns, Ratings, & Volume include the following:

	Stock	Current Price	Trigger	Down Trend	Up %	Daily ATR	Sector	Candlestick Pattern	Rating	Volume
1	HD	312.99	311.22	303.77	-2.95%	8.72	XHB	Spinning Top	-4.85	2,966,858
2	HOOD	73.63	73.10	65.39	-11.19%	3.87	XLC	Bearish Engulfing	-5.85	20,817,545
3	LOW	214.98	213.25	203.03	-5.56%	6.47	XHB	Bearish Harami	-4.85	2,801,668
4	TTWO	227.53	224.25	221.09	-2.83%	7.54	XLC	Bearish Engulfing	-5.85	7,048,109
5	UBER	71.82	71.20	69.23	-3.61%	2.65	XHB	Bearish Harami	-6.45	19,689,016
6	WSM	192.42	190.95	184.79	-3.97%	7.17	WSM	Evening Star Doji	-6.95	1,001,593

Sector	% Move/Rank	Symbol	% Change	tion/i	Symbol	% Change	Bullish Leader Graphics	Bearish Laggard Graphics
<b>[Index Consolidation]</b>	2.12%	Leaders	%	-	Laggards	%		
	1)	SPY	-0.21%	1)	\$RUT	-2.37%		
	2)	\$COMPX	0.08%	2)	IWM	-2.30%		
	3)	DIA	0.14%	3)	\$NDX.X	-0.38%		
<b>Sector Consolidation</b>	2.42%	Leaders	%	-	Laggards	%		
	1)	XLE	6.75%	1)	XHB	-6.04%		
	2)	CIBR	4.93%	2)	ARKK	-5.20%		
	3)	XLV	1.09%	3)	XLY	-3.06%		
<b>[ARKK] - [Kathy Wood]</b>	1.96%	Leaders	%	-	Laggards	%		
	1)	BEAM	3.00%	1)	COIN	-4.79%		
	2)	TWST	2.95%	2)	BMRN	-4.08%		
	3)	AMD	2.94%	3)	HOOD	-3.42%		
<b>[XBI] - [Biotech Sector]</b>	0.81%	Leaders	%	-	Laggards	%		
	1)	AMD	2.22%	1)	TEM	-11.95%		
	2)	TSLA	0.08%	2)	CRSP	-11.73%		
	3)	CRSP	-1.43%	3)	SHOP	-9.22%		
<b>[CIBR] - [Cyber Security]</b>	6.58%	Leaders	%	-	Laggards	%		
	1)	ZS	5.90%	1)	AVGO	-0.37%		
	2)	SAIC	3.99%	2)	AKAM	0.80%		
	3)	FTNT	3.08%	3)	FTNT	0.91%		



Friday Sector Review Analysis

Sector	% Move/Rank	Symbol	% Change	tion/f	Symbol	% Change	Bullish Leader Graphics	Bearish Laggard Graphics
<b>[XHB] - [Home Builders]</b>	<b>3.84%</b>	Leaders	%	-	Laggards	%		
	1)	CVCO	3.60%	1)	WMS	-1.59%		
	2)	LB	3.35%	2)	IBP	-1.21%		
	3)	JCI	2.13%	3)	LOW	-1.09%		
<b>[XLB] - [Materials]</b>	<b>-0.02%</b>	Leaders	%	-	Laggards	%		
	1)	STLD	3.53%	1)	IP	-0.70%		
	2)	DD	2.8%	2)	NEM	-0.67%		
	3)	NUE	2.46%	3)	VMC	-0.55%		
<b>[XLC] - [Communications]</b>	<b>-0.53%</b>	Leaders	%	-	Laggards	%		
	1)	TTD	4.61%	1)	TTWO	-4.36%		
	2)	OMC	1.57%	2)	CHTR	-2.62%		
	3)	PSKY	1.17%	3)	NWSA	-1.83%		
<b>[XLE] - [Energy]</b>	<b>0.02%</b>	Leaders	%	-	Laggards	%		
	1)	VLO	2.66%	1)	HAL	-1.17%		
	2)	MPC	1.42%	2)	FANG	-0.46%		
	3)	TRGP	2.41%	3)	SLB	-0.06%		
<b>[XLF] - [Financials]</b>	<b>1.58%</b>	Leaders	%	-	Laggards	%		
	1)	BRK.B	1.16%	1)	HOOD	-3.42%		
	2)	JPM	1.00%	2)	KKR	-0.76%		
	3)	ICE	0.98%	3)	CB	-0.72%		

Sector	% Move/Rank	Symbol	% Change	tion/l	Symbol	% Change	Bullish Leader Graphics	Bearish Laggard Graphics
<b>[XLI] - [Industrials]</b>	0.21%	Leaders	%	-	Laggards	%		
		1) UPS 2.91%	1) UBER -2.33%		2) ETN 2.50%	2) HWM -1.29%		
<b>[XLK] - [Technology]</b>	2.30%	Leaders	%	-	Laggards	%		
		1) O 11.14%	1) NVDA -2.38%		2) APH 5.89%	2) MU -2.17%		
<b>[XLP] - [Consumer Staples]</b>	0.15%	Leaders	%	-	Laggards	%		
		1) EL 11.57%	1) COST -2.06%		2) HSY 2.31%	2) WMT -1.05%		
<b>[XLRE] - [Real Estate]</b>	3.12%	Leaders	%	-	Laggards	%		
		1) ESS 1.08%	1) SBAC -1.20%		2) IVH 0.09%	2) DLR -1.15%		
<b>[XLV] - [Healthcare]</b>	3.32%	Leaders	%	-	Laggards	%		
		1) MCK 5.71%	1) REGN -0.87%		2) COR 3.57%	2) DHR -0.77%		
<b>[XLY] - [Consumer Discretionary]</b>	2.27%	Leaders	%	-	Laggards	%		
		1) MO 11.67%	1) CRWD -4.02%		2) CAT 8.39%	2) VZ -3.05%		



### Wall Street Market Report Summary (05-26-26):

#### Magnificent Seven Stocks:

(AAPL, AMZN, GOOGL, META, MSFT, NFLX, TSLA):

Two-week performance: [+0.20%] vs. [-0.18%] last week

#### Index Performance:

Two-week averages: [+2.12%] vs. [-0.81%] last week

#### Sector Performance:

Two-Week Sector Averages:

- Overall Sectors: [+2.42%] vs. [-0.84%] last week.
- ARKK Funds: [+2.91%] vs. [-4.88%] last week.
- Bio-Tech: [+2.79%] vs. [+0.11%] last week.
- Communications: [-0.53%] vs. [-0.73%] last week.
- Consumer Staples: [+0.15%] vs. [+0.56%] last week.

## Wall Street Market Report Summary [05-26-26]

Page 2

### Sector Performance:

Two-Week Sector Averages:

- Cybersecurity: [+6.58%] vs. [+4.93%] last week.
- Energy: [+0.02%] vs. [-6.75%] last week.
- Financial: [-1.58%] vs. [-0.25%] last week.
- Technology: [+2.30%] vs. [+0.42%] last week.
- Healthcare: [-4.72%] vs. [-0.12%] last week.
- Semiconductor: [+9.78%] vs. [-0.79%] last week.

### Friday's Stock Highlights:

- Winners: RGTI: [+17.33%], SWKS: [+12.99%], CRDO: [+11.84%].
- Laggards: COIN: [-4.79%], TTWO: [-4.36%], BMRN: [-4.08%].

### Trade Ideas for this Week:

Bull Call Spread on [OKTA] @ [(+85 @ -\$10.30) / (-100 @ +\$3.28)]:

Net Debit: \$702.50

Max Profit: \$797.50 @ 51% Profit Chance:

Breakeven: > \$92.03 (-0.02%)

Daily ATR: 3.92

ATR Move Requisite: 1.91

Pin Pressure: \$90

Trigger: \$92.85

Target: \$97.97

Anticipated ROI (if Targets Achieved): 114%

[Expiry: 5/29/26]

## Wall Street Market Report Summary [05-26-26]

Page 3

Bear Put Spread Idea on [TTWO] @ [(+235.00 @ -\$13.05 / (-220.00 @ +\$5.50))]:

Net Debit: \$840

Max Profit: \$1,160 @ 50% Profit Chance

Breakeven: < \$70.80 (+0.0%)

Daily ATR: 7.54

ATR Move Requisite: 0.99

Pin Pressure: \$200

Trigger: \$224.25

Target: \$208.50

Anticipated ROI (if Targets Achieved): 98.70%

[Expiry: 6/18/26]

### Trading Insights:

Individual stock movements and sector insights provide insights into market dynamics. Daily variance graphs highlight volatility trends with notable stocks showing significant fluctuations.

*Information assembled by IV-TRS Trading is for informational purposes only. Thoughts and ideas conveyed by Bruce Marshall should not be utilized for initiating your actual trades in the market. Investments in any stock option or individual stock positions should be pursued by investors with extreme caution at the sole and exclusive risk of the individual investor.*



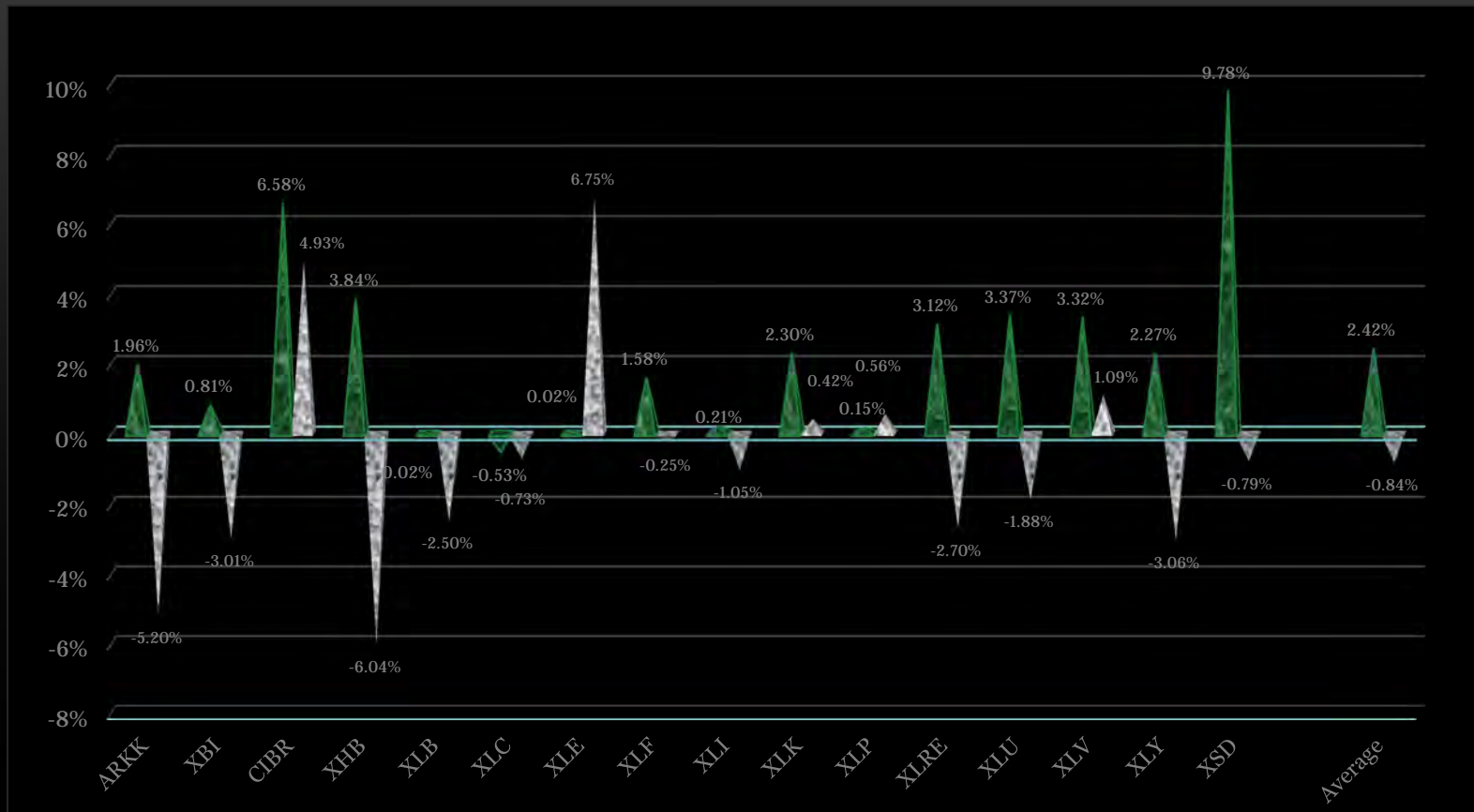


## “Chart Walk ”

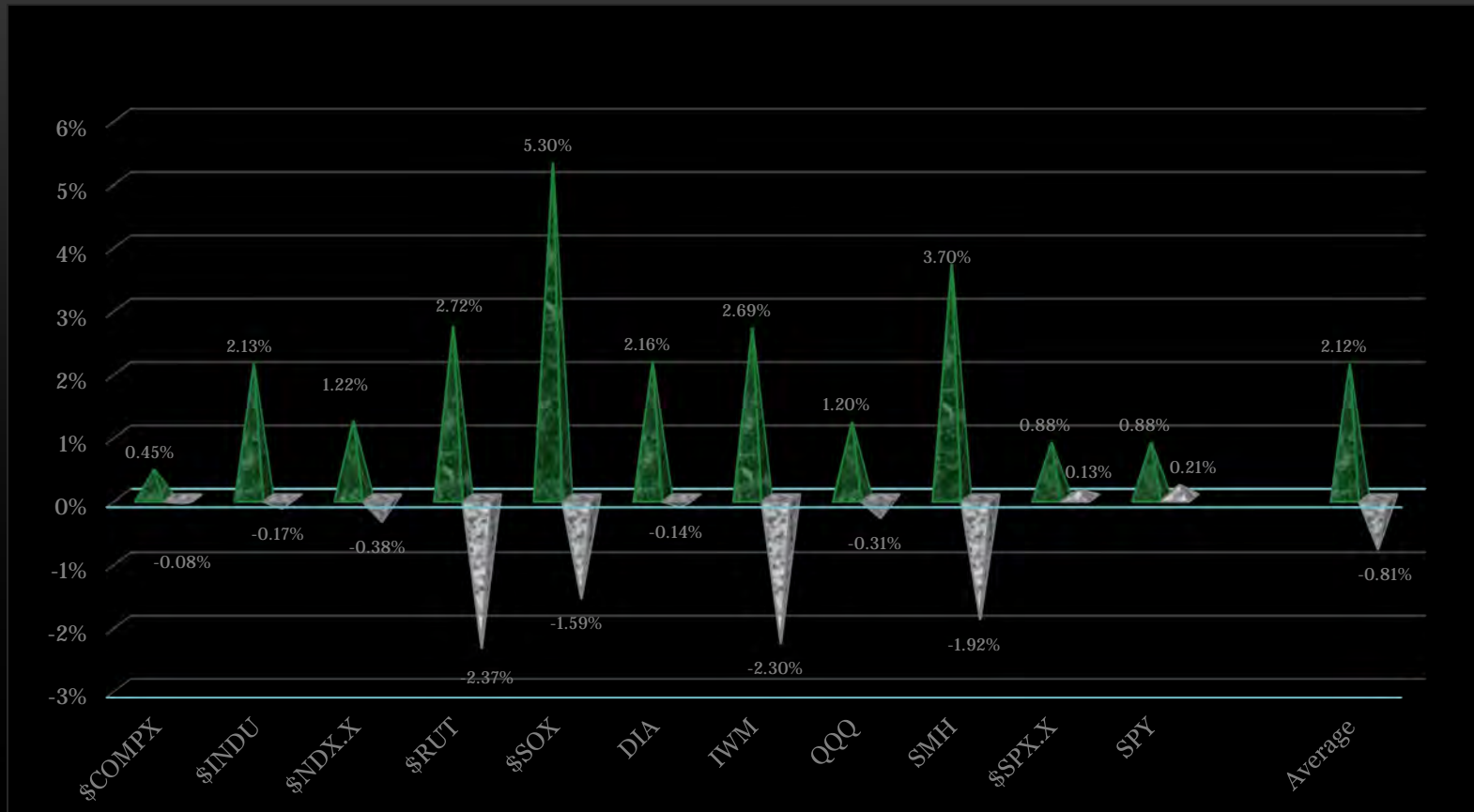
Our Wall Street Market Report [05-26-26]



Two Week Sector Performance Graph Averages: [+2.42%] vs. [-0.84%] Last Week



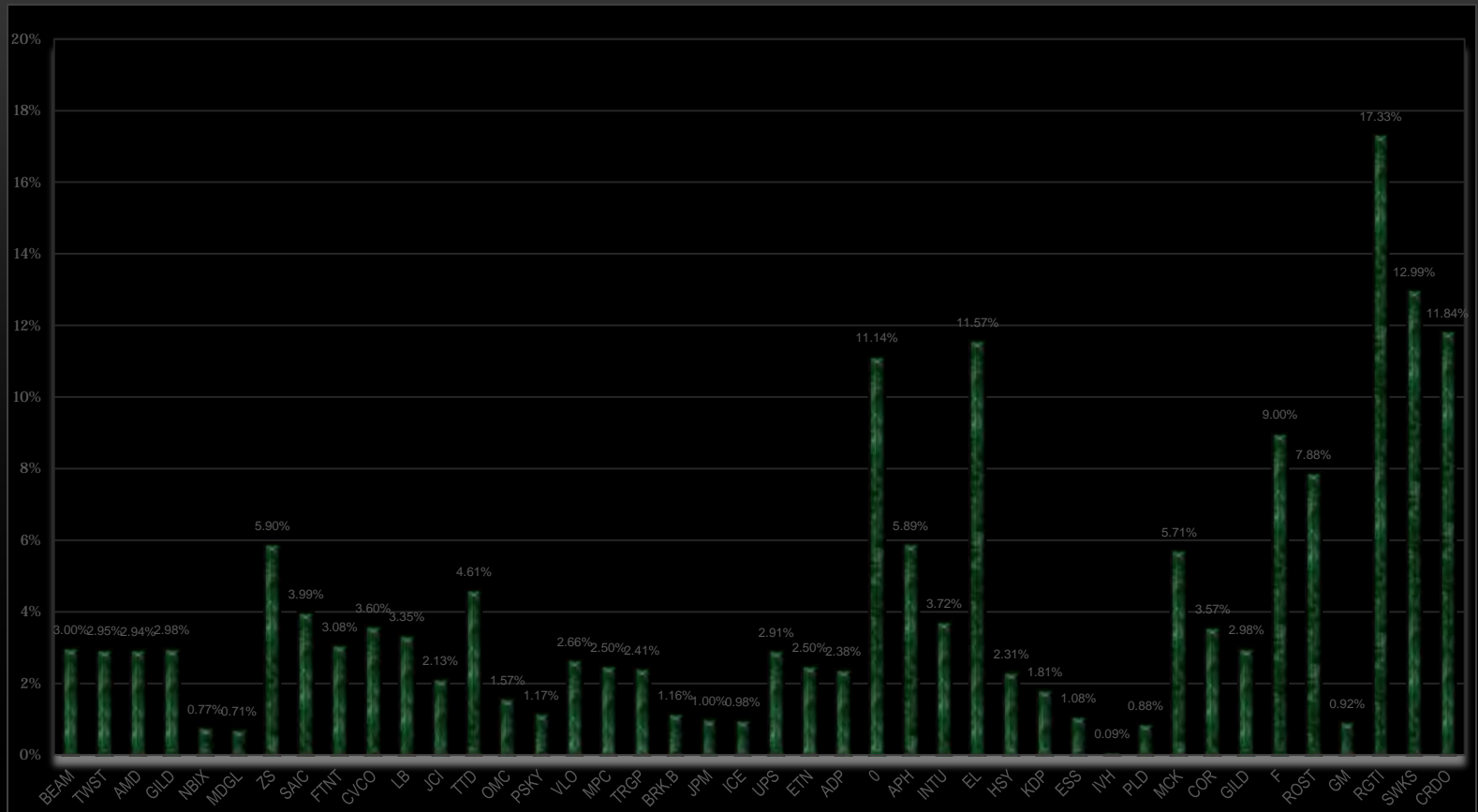
Two Week Index Performance Graph Averages: [+2.12%] vs. [-0.81%] Last Week



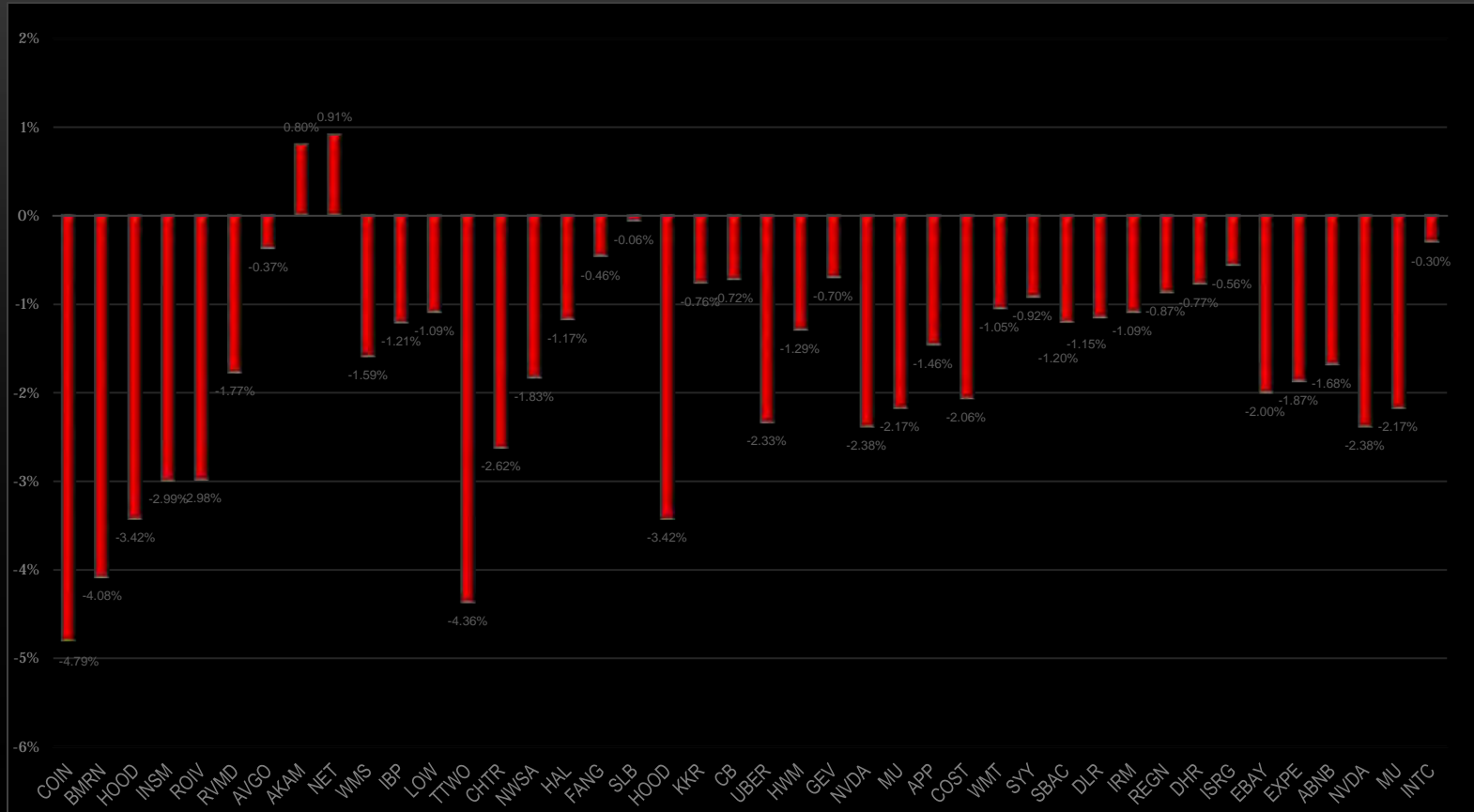
VIX Three Week (Fear Index) History [-9.39%] this week ... Prior Weeks [+7.21%] ... [+1.18%]



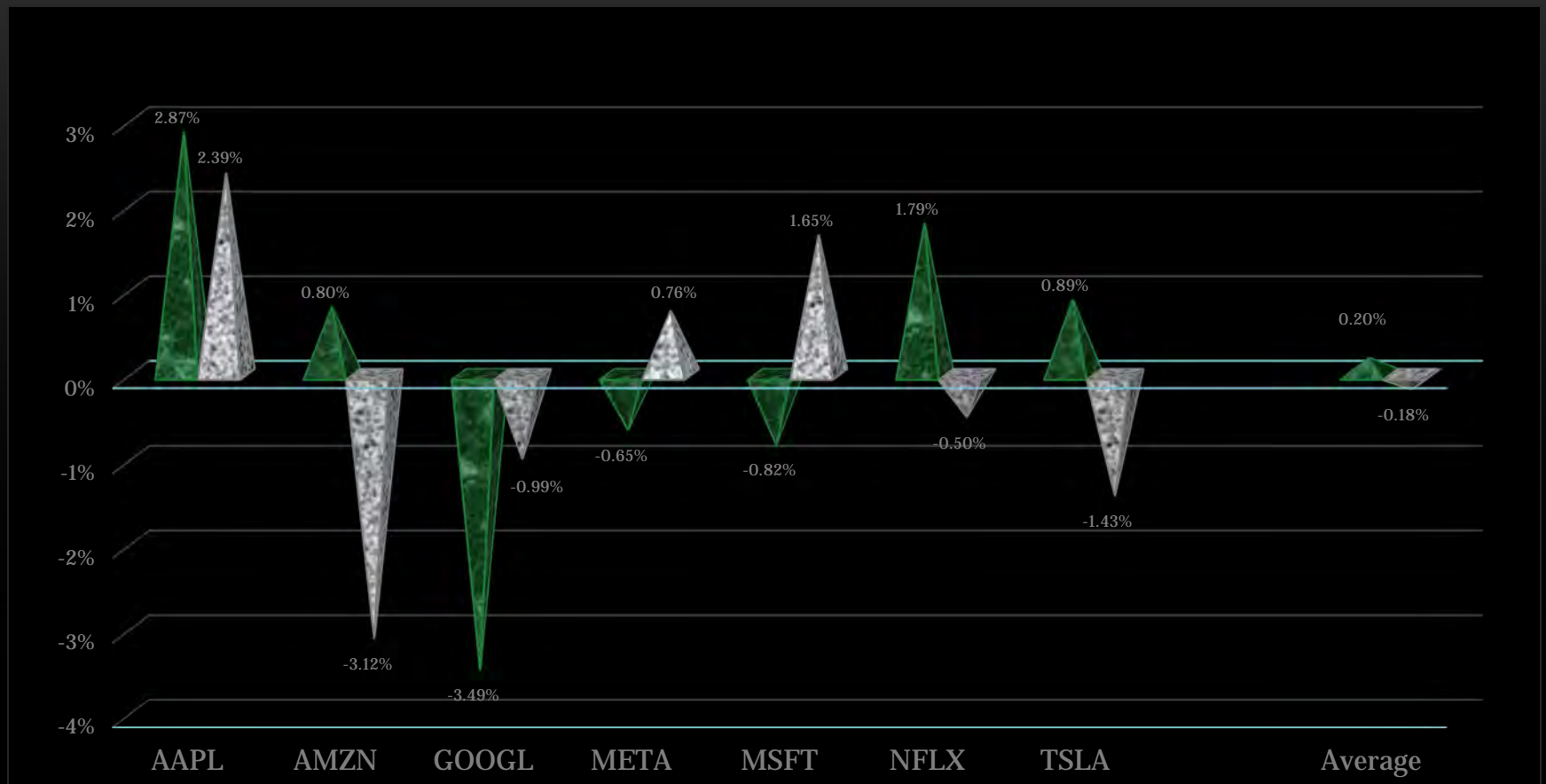
Friday's Stock Winners Within The Individual Sectors: [RGTI: +17.33%] - [SWKS: +12.99%] - [CRDO: +11.84%]



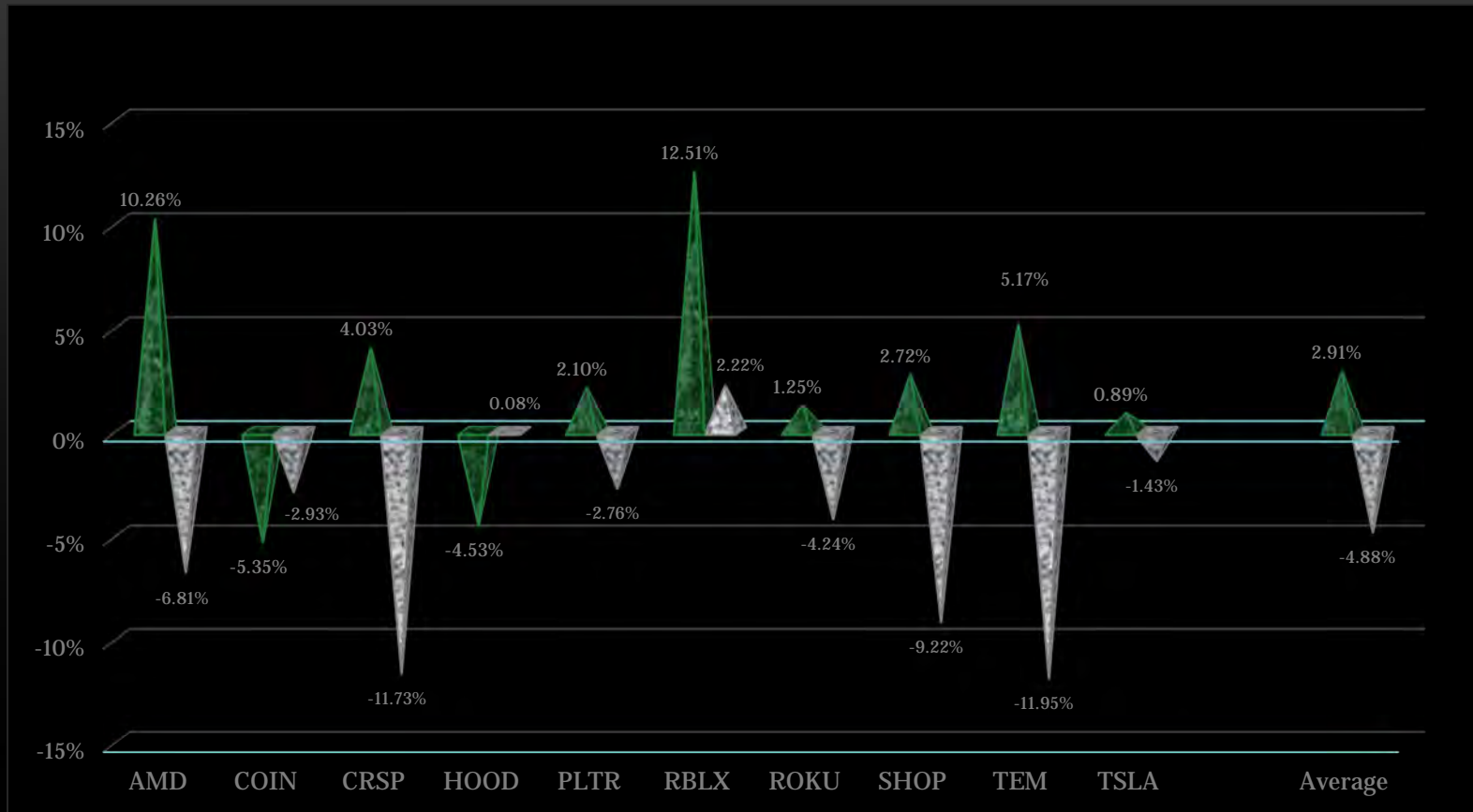
Friday 's Stock Laggards Within The Individual Sectors: [COIN: -4.79%] - [TTWO: -4.36%] - [BMRN: -4.08%]



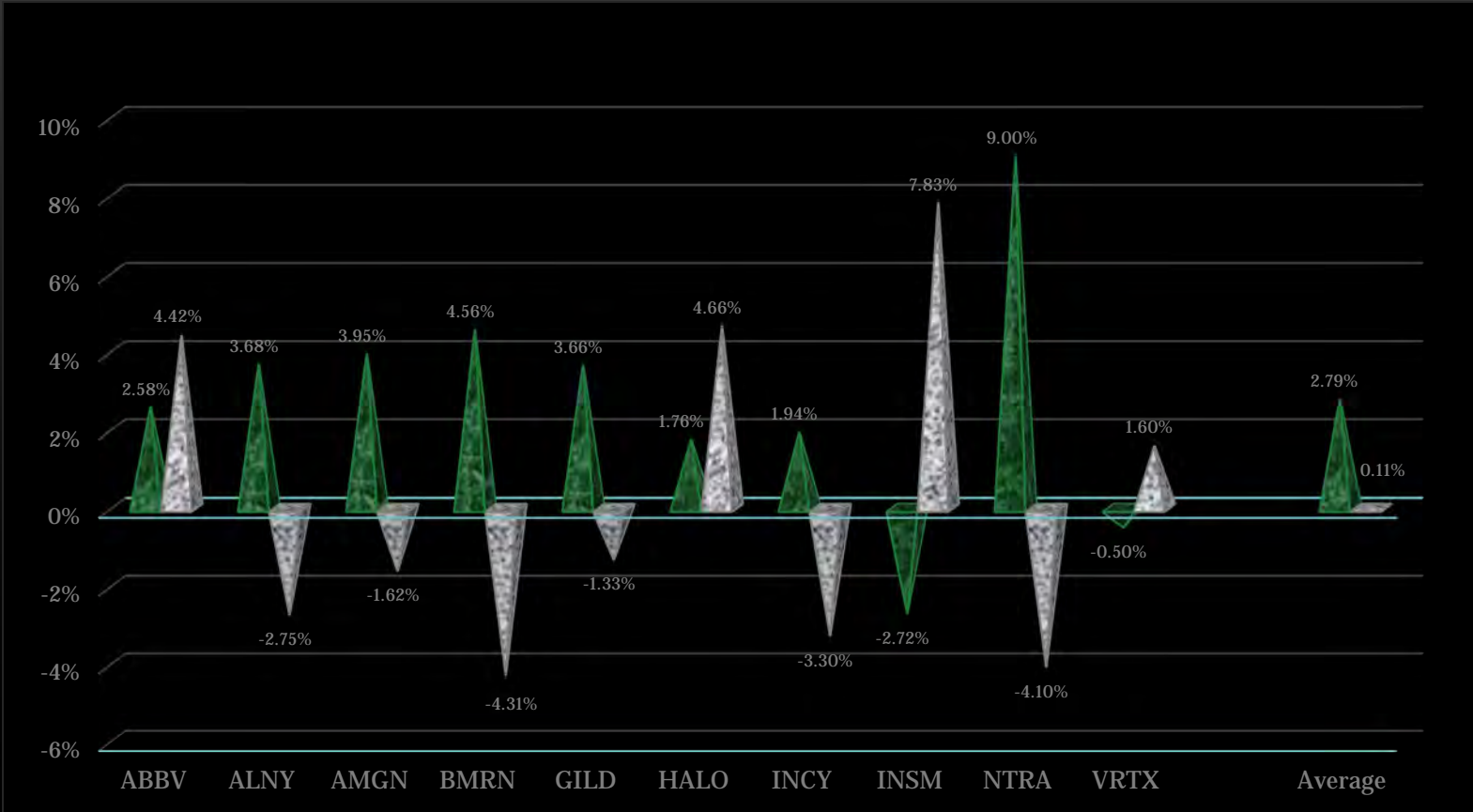
# Two Week "Magnificent Seven" Performance Graph: [+0.20%] vs. [-0.18%] Last Week



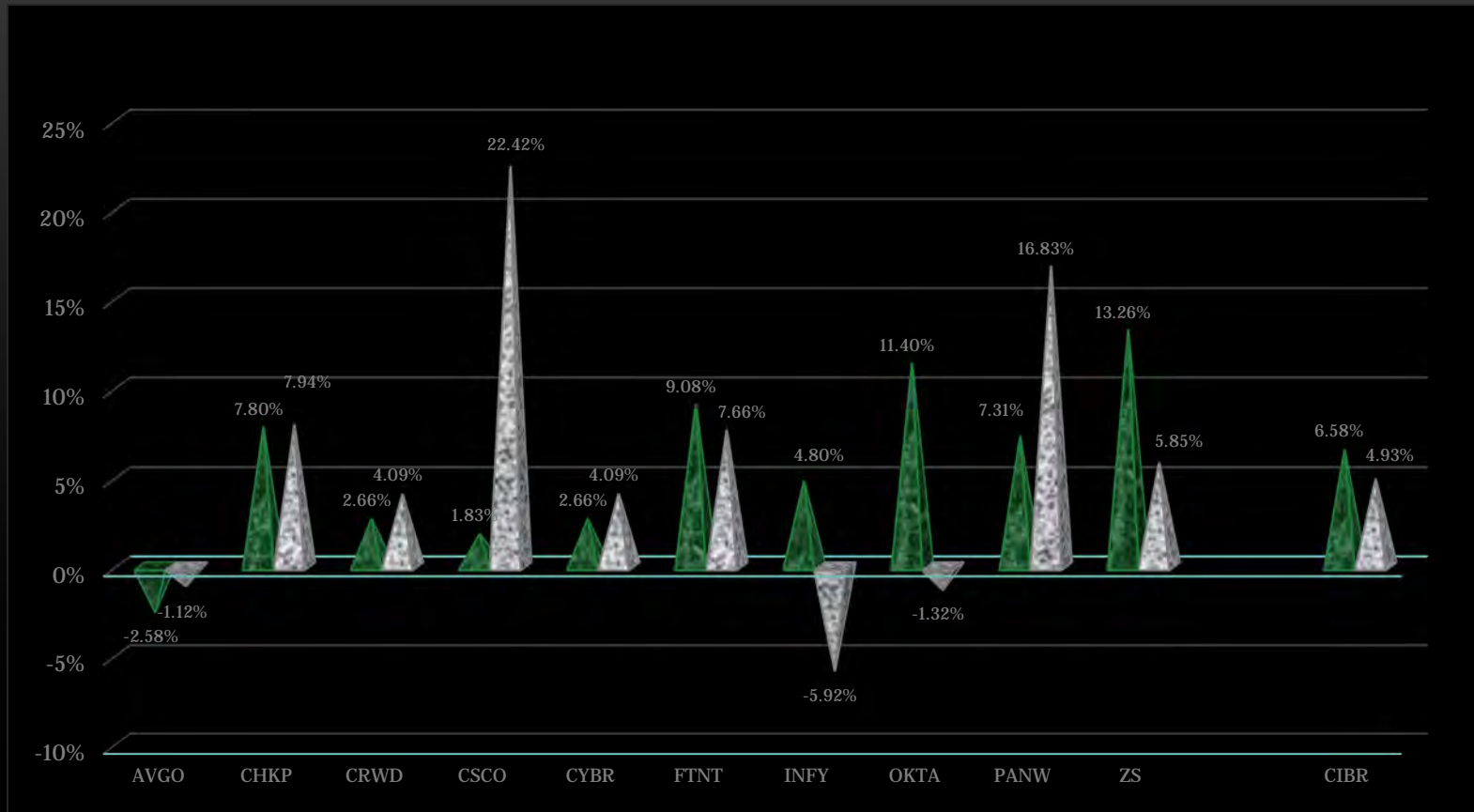
Two Week ARKK Funds : [+2.91%] vs. [-4.88%] Last Week



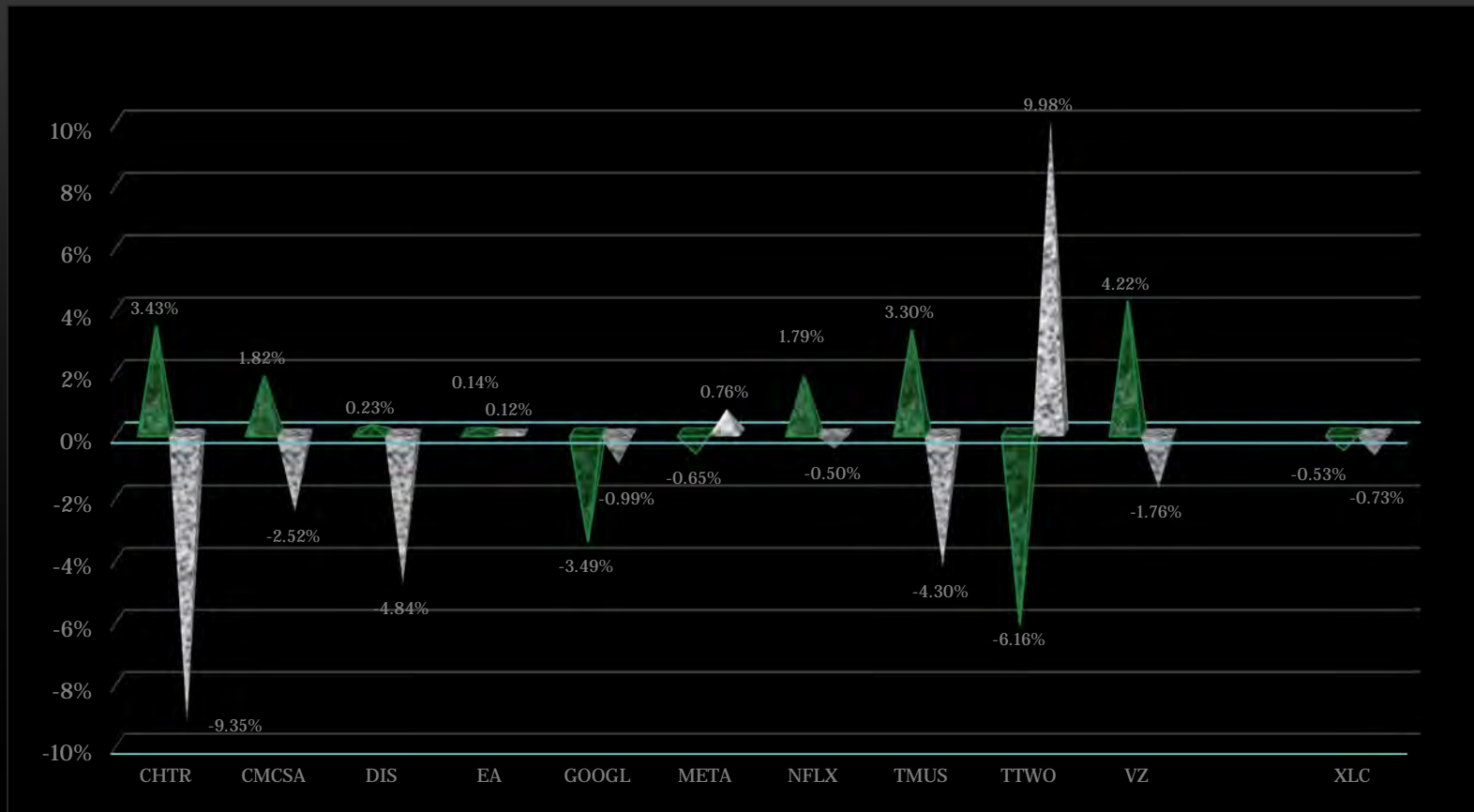
Two Week Bio-Tech Sector Averages: [+2.79%] vs. [+0.11%] Last Week



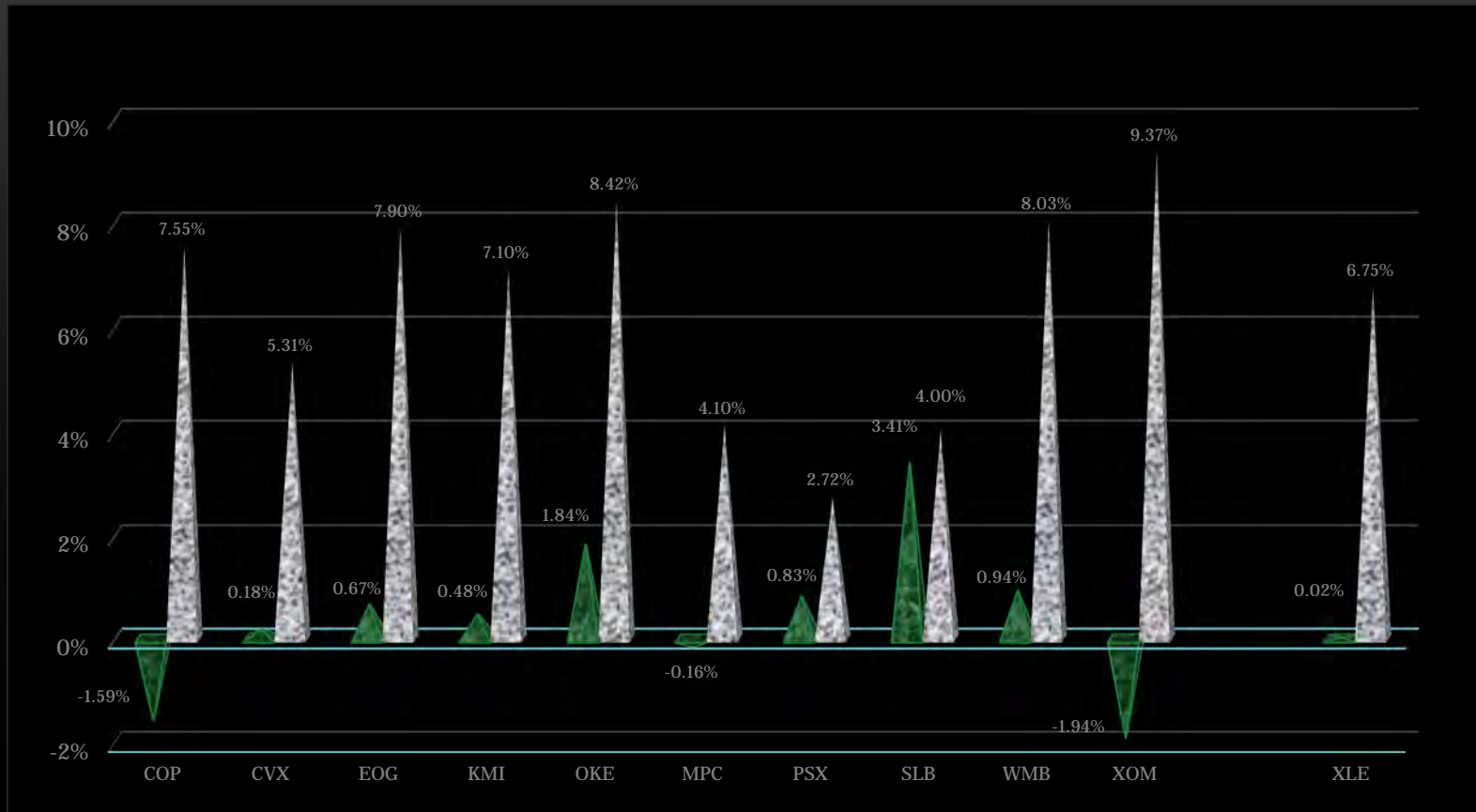
Two Week Cyber-Security Sector Averages: [+6.58%] vs. [+4.93%] Last Week



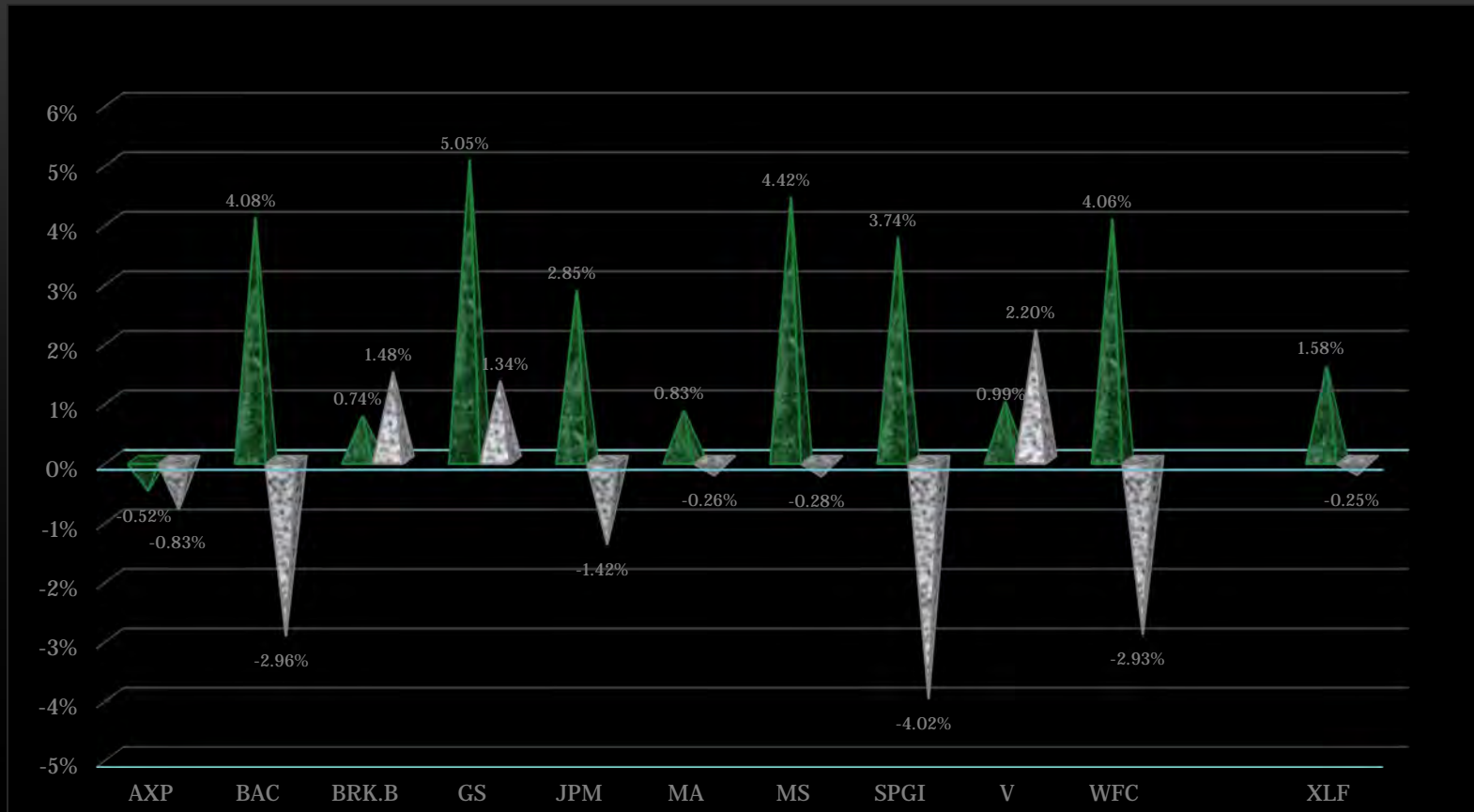
Two Week Communications Sector Averages: [-0.53%] vs. [-0.73%] Last Week



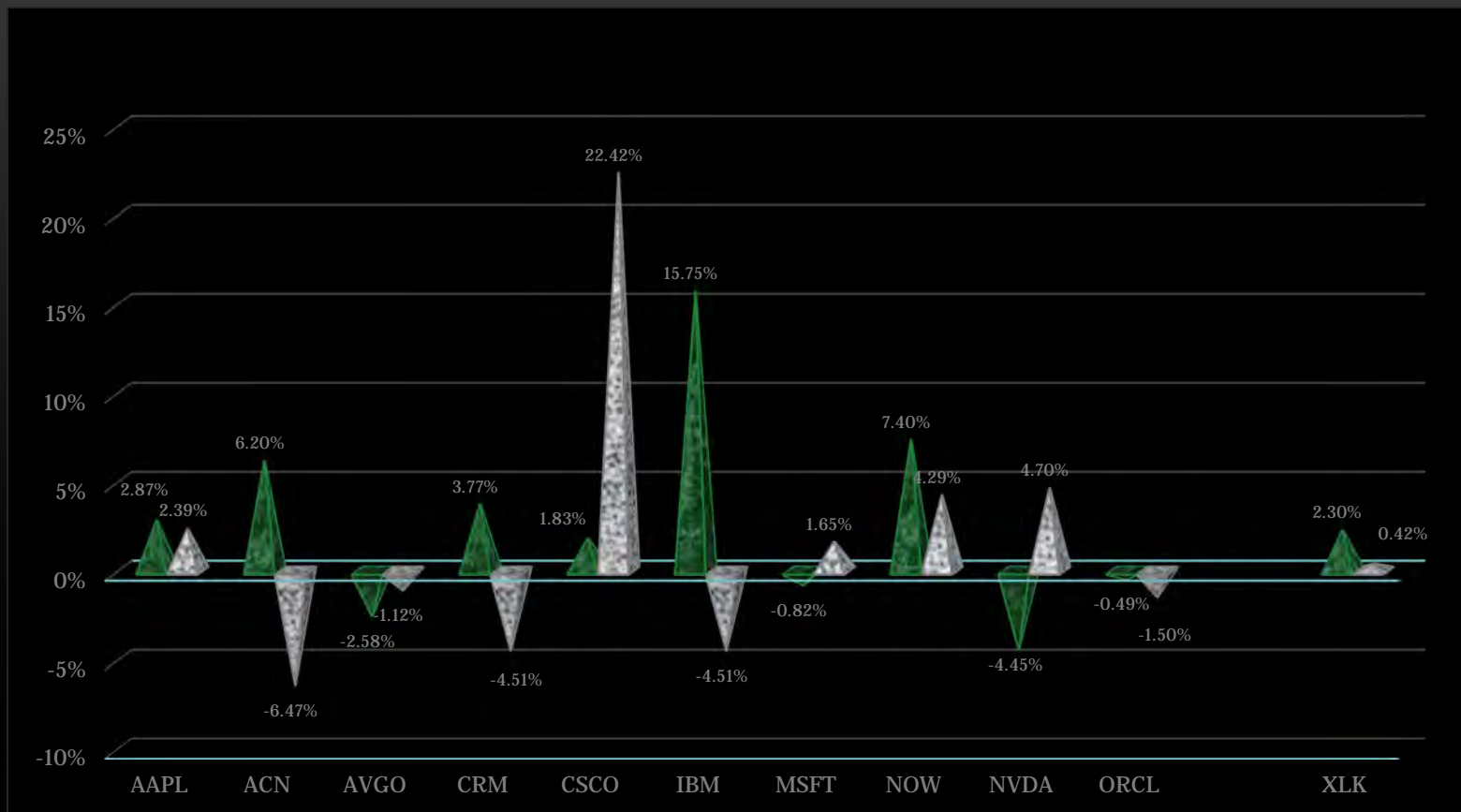
Two Week Energy Sector Averages: [+0.02] vs. [+6.75% ] Last Week



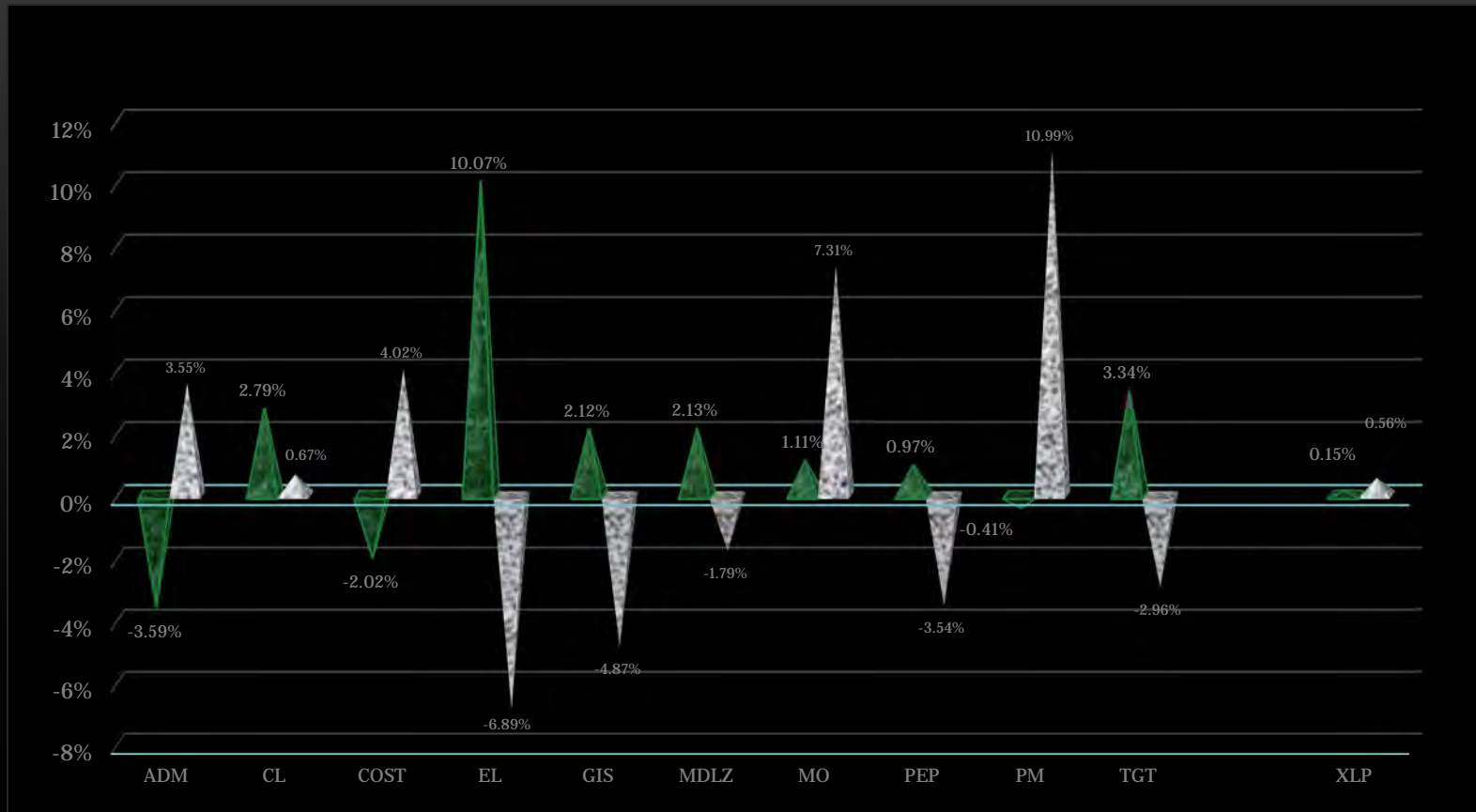
Two Week Financial Sector Averages: [-1.58%] vs. [-0.25%] Last Week



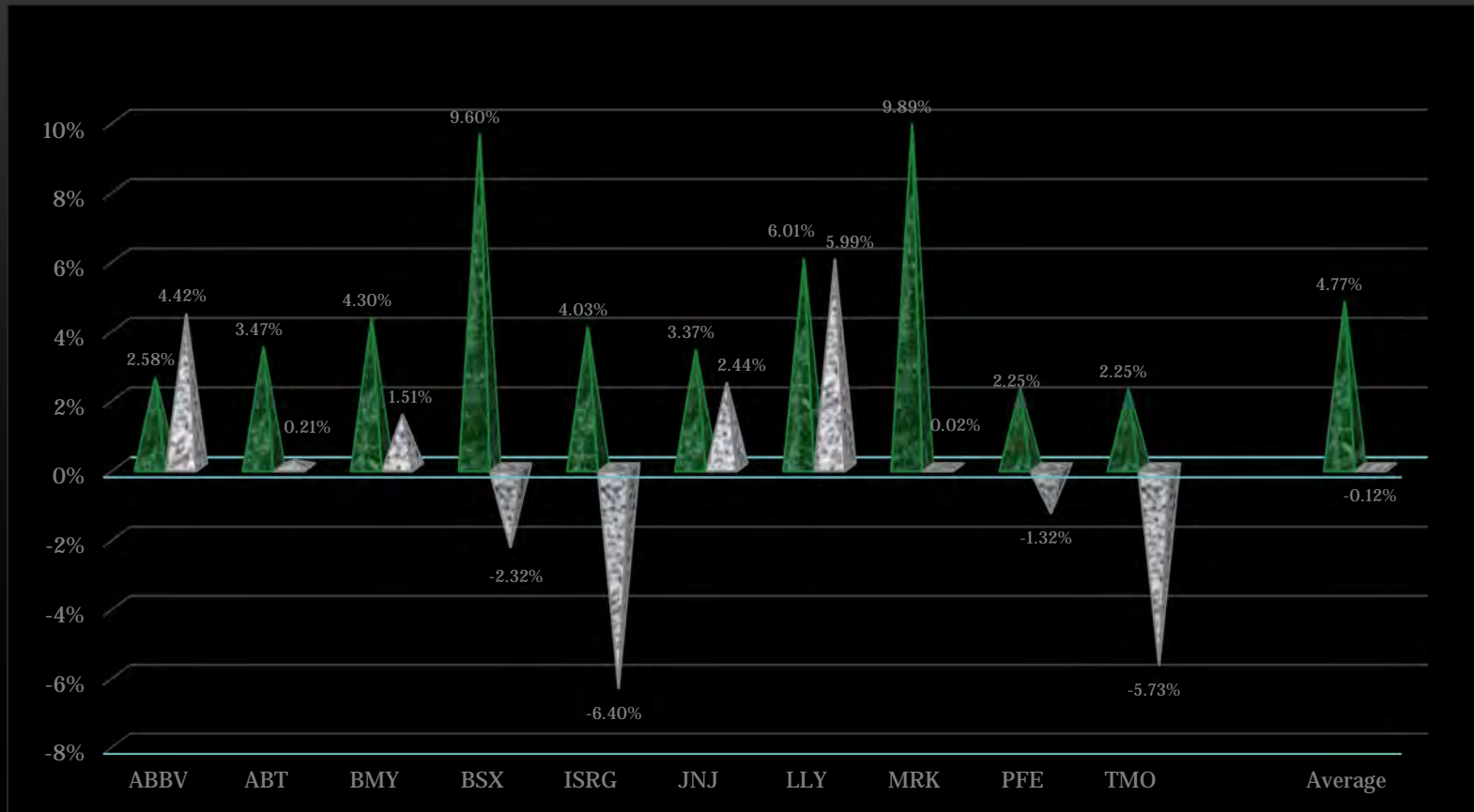
Two Week Technology Sector Averages: [+2.30%] vs. [+0.42%] Last Week



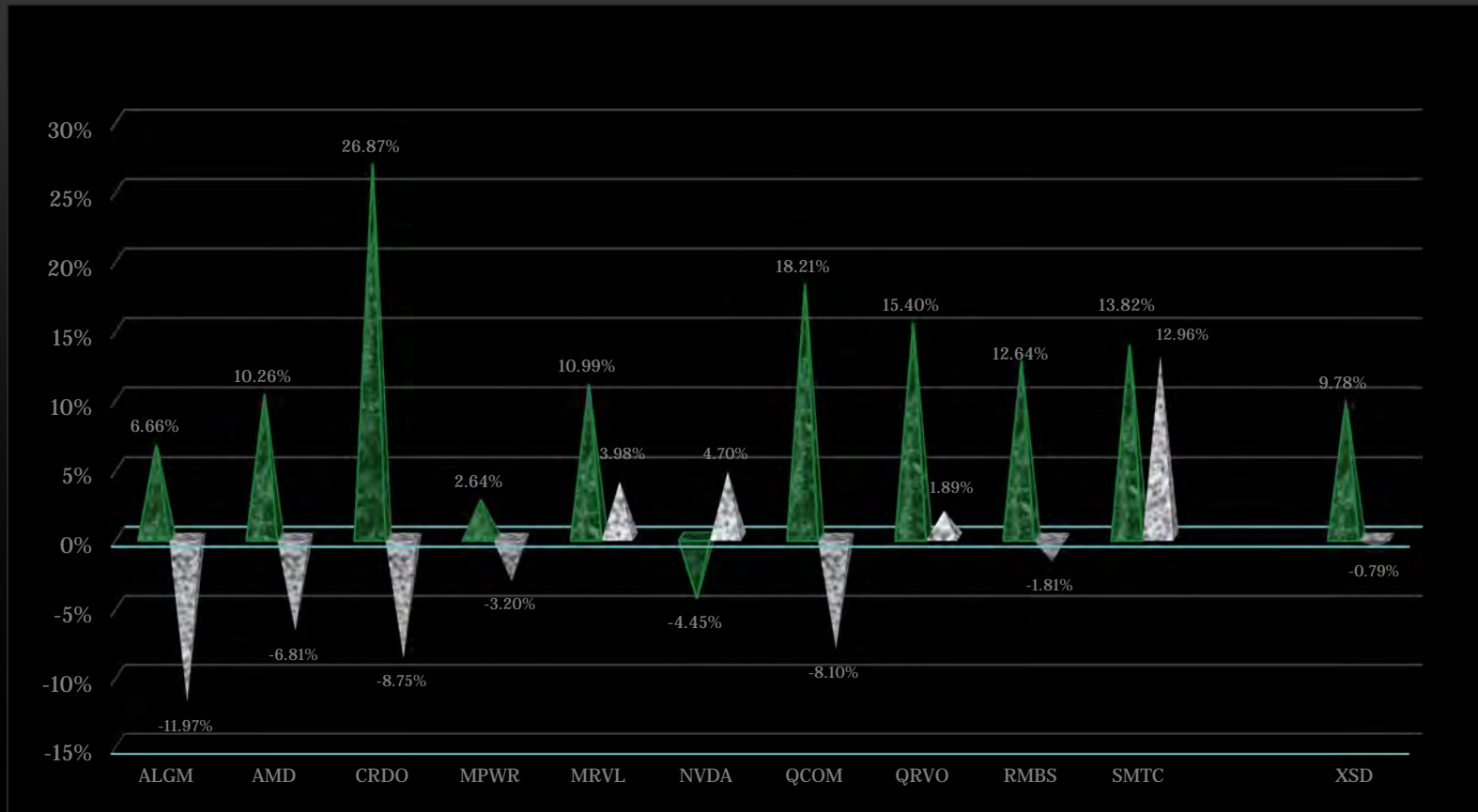
Two Week Consumer Staples Sector Averages: [+0.15%] vs. [+0.56%] Last Week



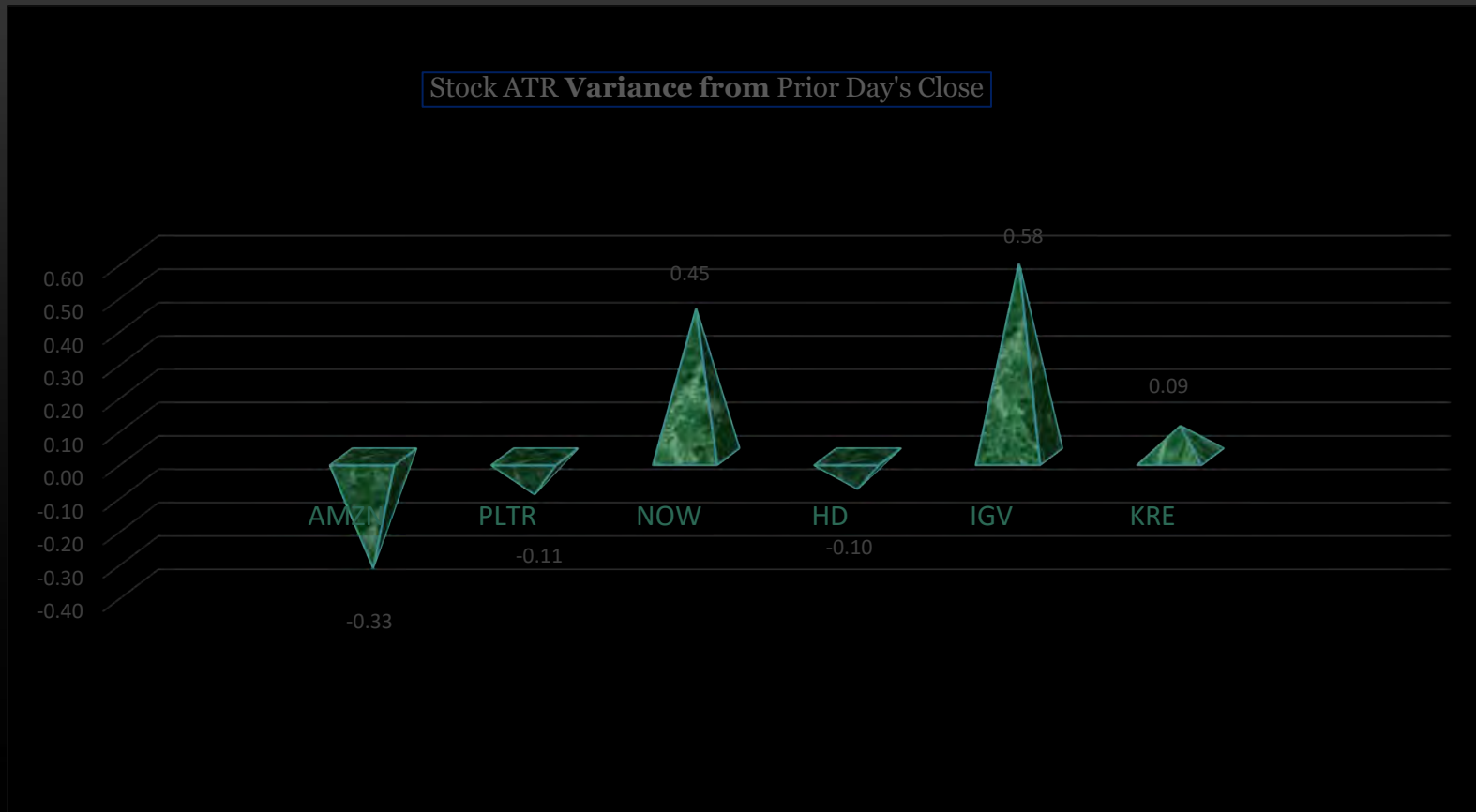
## Two Week Healthcare Sector Averages: [+4.77%] vs. [-0.12%] Last Week



Two Week Semiconductor Averages: [+9.78%] vs. [-0.79%] Last Week

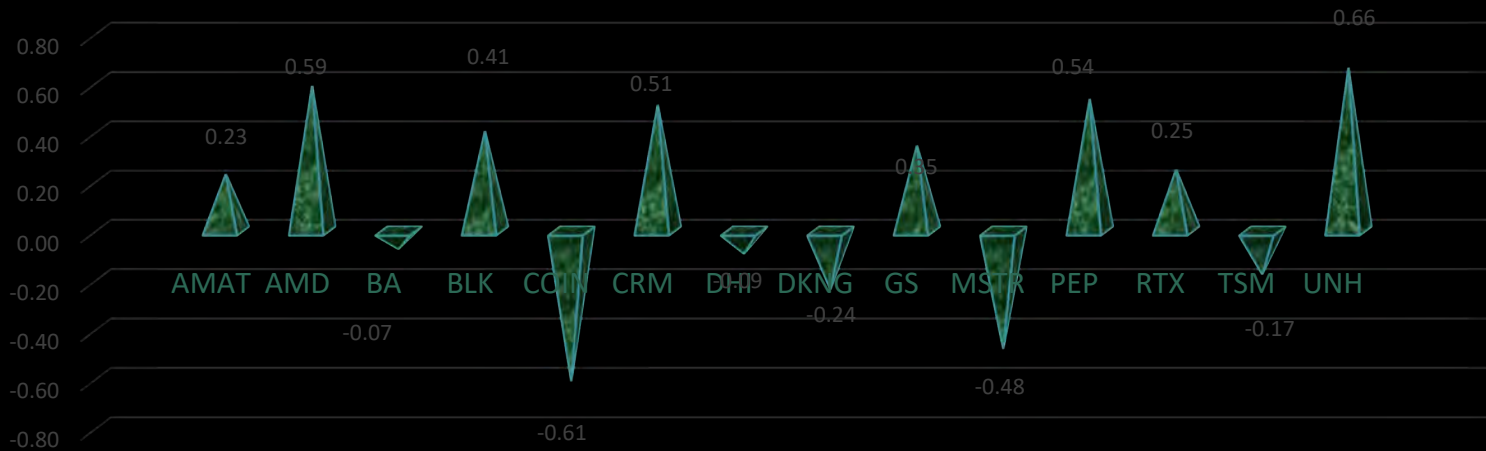


# Friday's "Rebel Pit" Average True Range ("ATR") Daily Variance Graph



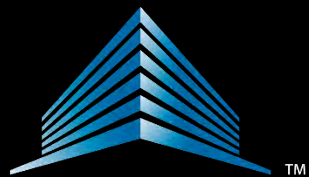
# Friday's "My Daily Stalkers" Average True Range ("ATR") Daily Variance Graph

Stock ATR Variance from Prior Day's Close



IV-TRS Trading™

\$INDU: Up Market @ [+1.89%] to [51,555] ... Down Market @ [-1.59%] to [49,774]



IV-TRS Trading™

IWM: Up Market @ [+2.02%] to [291.00] ... Down Market @ [-3.54%] to [275.01]



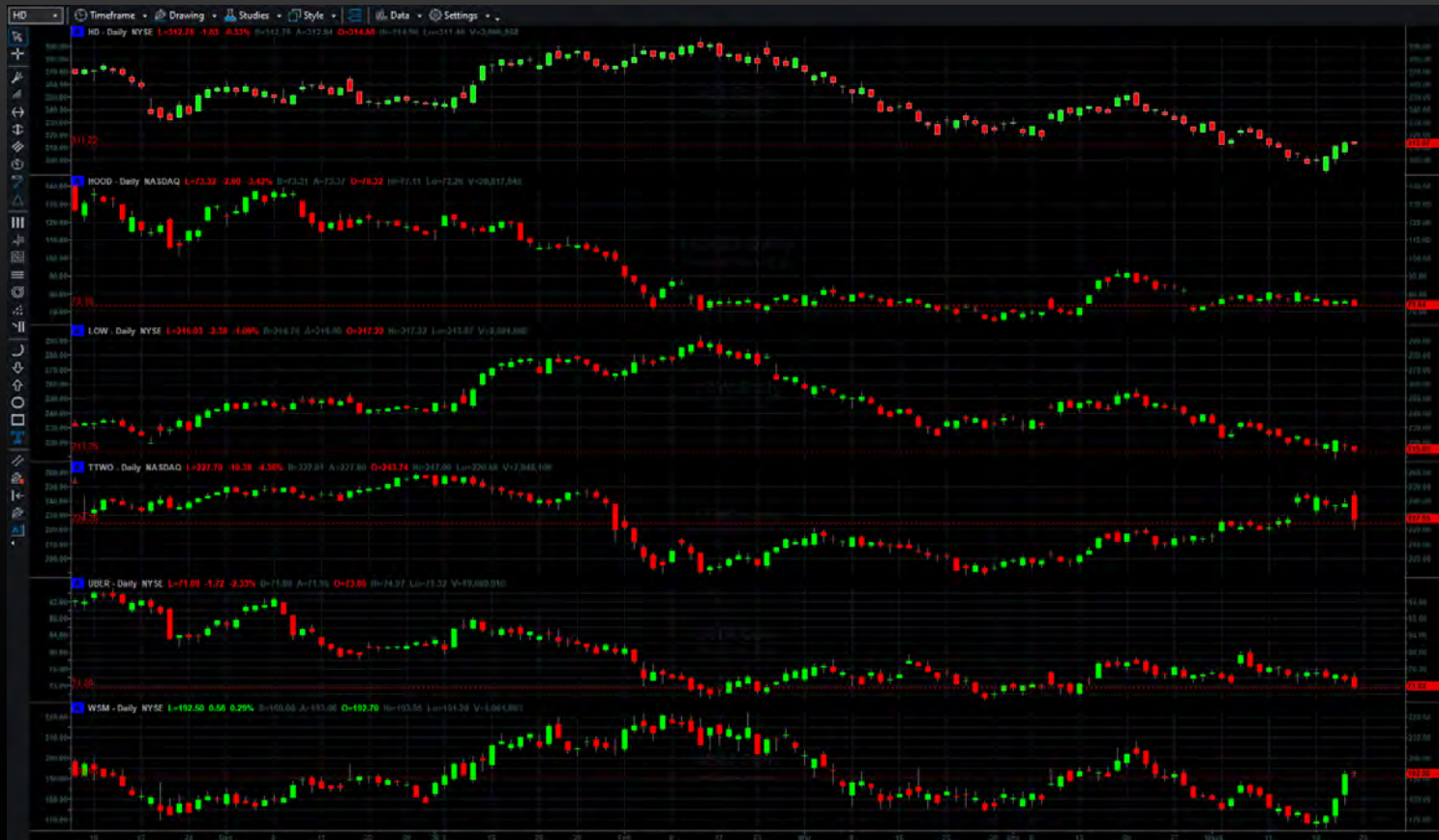
SPY: Up Market @ [+2.39%] to [783.82] ... Down Market @ [-0.97%] to [738.33]



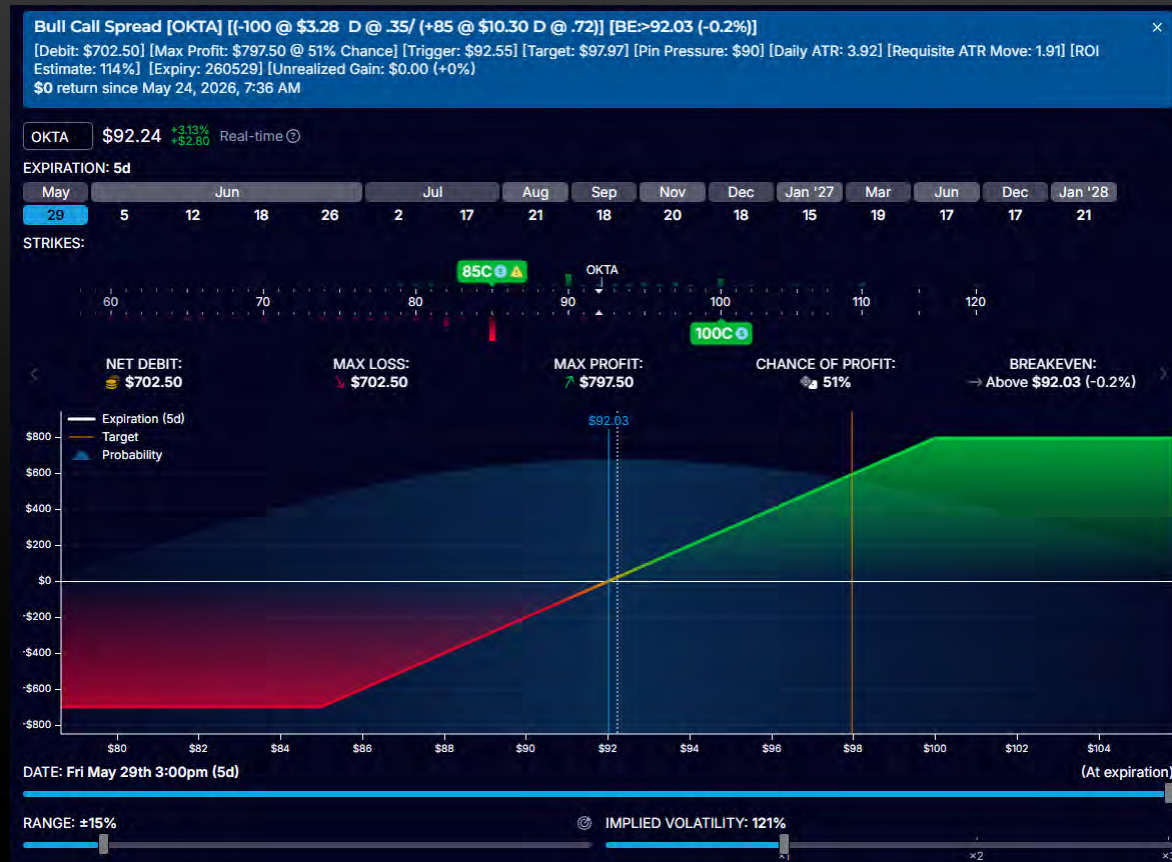
This Week's Bullish Trade Ideas: [FTNT] [OKTA] [PANW] [MRK] [QRVO] [SWKS]



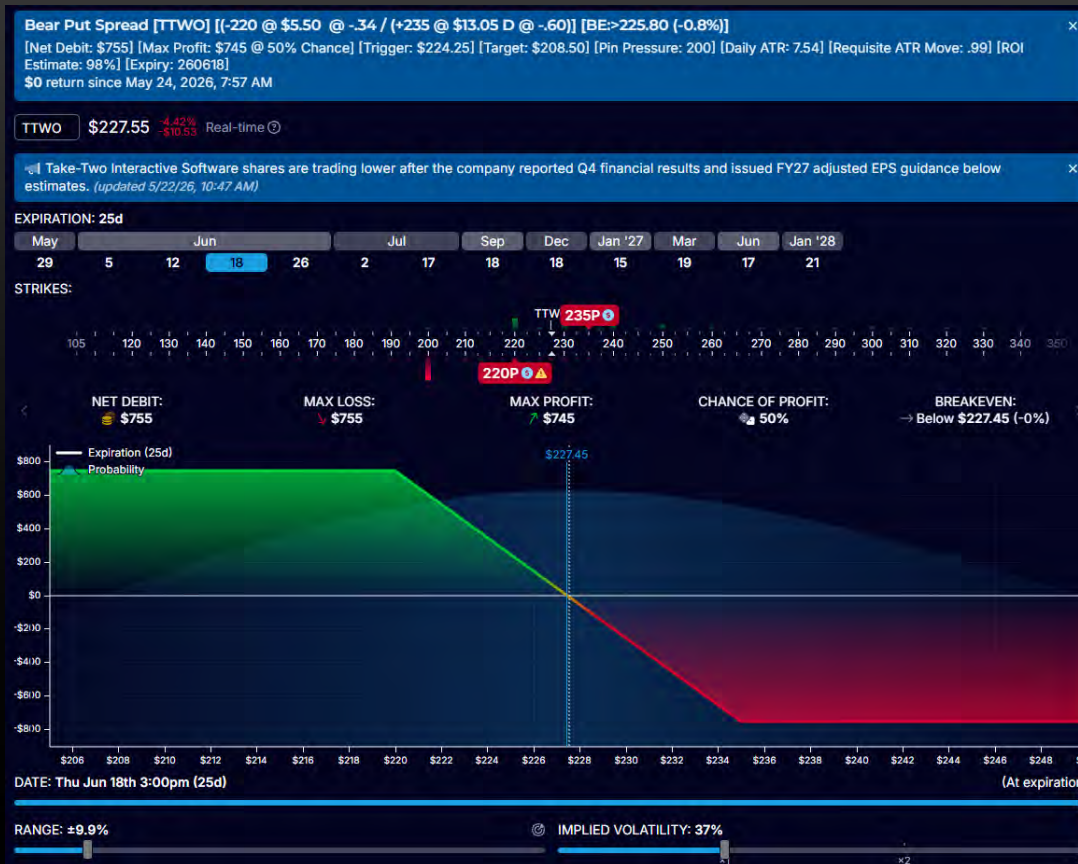
This Week's Bearish Trade Ideas: [HD] [HOOD] [LOW] [TTWO] [UBER] [WSM]



Bull Call Spread Idea: [OKTA] - [(+85 / -100) [Trigger @ \$92.55] [Target @ \$97.97] [Profit Potential @ 160%]



Bear Put Spread Idea: [TTWO] - [(-220 +235)] [Trigger @ \$224.25] [Target @ \$208.50] [Profit Potential @ 98.7%]





## “Chart Walk ”

Our Wall Street Market Report [05-26-26]

